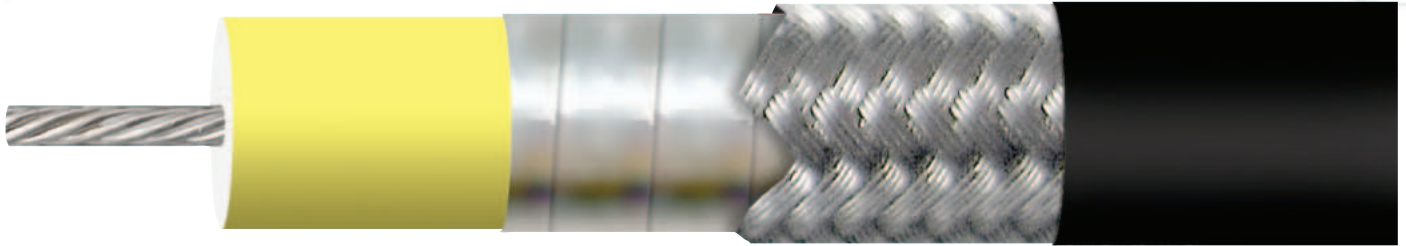




750 SERIES

OPERATING UP TO 6.5 GHz



Center Conductor
Silver Plated
Copper Stranded

Dielectric
PTFE

Foil
Silver Plated
Copper

Braid
Silver Plated
Copper

Outer Jacket
Santoprene
(0.765", 19.68 mm)

CABLE SPECIFICATIONS

| | 7506-SP |
|--------------------------------------|----------------------|
| ELECTRICAL CHARACTERISTICS | |
| Impedance | 50 +/- 2Ω |
| Cut Off Frequency (cable only, max) | 6.5 GHz |
| Capacitance | 24.5 pF/ft. |
| Velocity of Propagation | 83% |
| Time Delay | 1.22 ns/ft. |
| Shielding Effectiveness up to 18GHz | >90 dB |
| Cable Attenuation Factors * | K1 = 1.9, K2 = 0.183 |
| Power Handling | See Chart |
| MECHANICAL CHARACTERISTICS | |
| Weight | 5.8 oz/ft (536 g/m) |
| Static Bend Radius | 5" (127mm) |
| Dynamic Bend Radius | 8.0" (203mm) |
| ENVIRONMENTAL CHARACTERISTICS | |
| Operating Temperature Range | -65°C to +135°C |
| RoHS 3 (EU 2015/863) | Yes |

*Attenuation = $K1\sqrt{f} + K2f$ (cable only)



750 SERIES

OPERATING UP TO 11 GHz

CABLE ATTENUATION

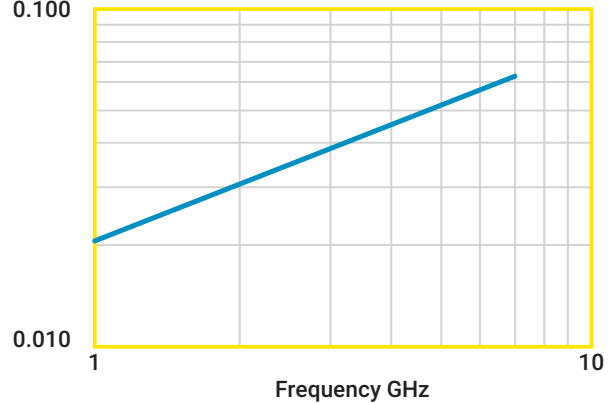
ATTENUATION (MAX)

7506-SP

| GHz | dB/ft. | dB/m | Power(W) @ 20°C @ Sea Level |
|-----|--------|-------|-----------------------------------|
| 0.1 | 0.006 | 0.020 | 20000 |
| 0.5 | 0.014 | 0.047 | 12500 |
| 1 | 0.021 | 0.069 | 10000 |
| 2 | 0.031 | 0.102 | 6690 |
| 3 | 0.038 | 0.125 | 5000 |
| 4 | 0.045 | 0.148 | 4475 |
| 5 | 0.051 | 0.167 | 3000 |
| 6 | 0.057 | 0.187 | 2500 |
| 6.5 | 0.060 | 0.198 | 1750 |

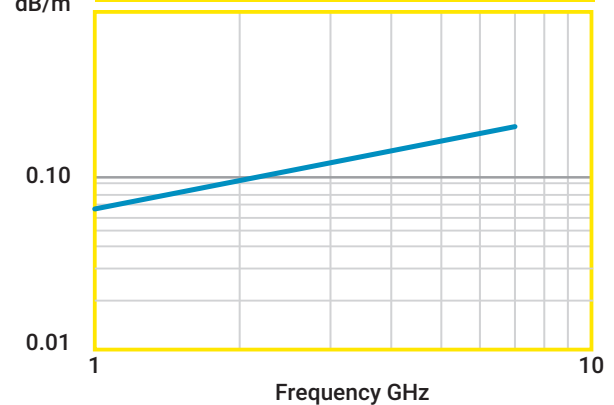
dB/ft
0.100

ATTENUATION



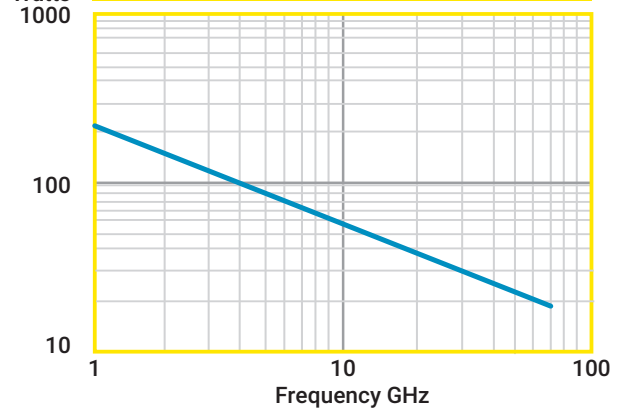
dB/m

ATTENUATION

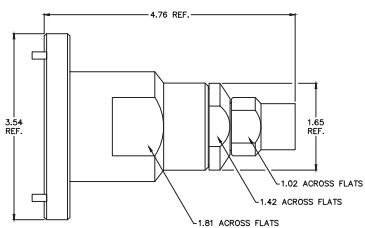


Watts
1000

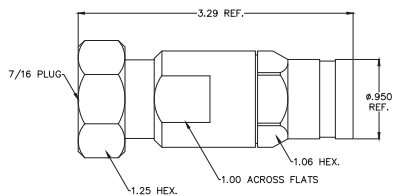
ATTENUATION



CONNECTORS FOR 150 SERIES



1 5/8 EIA FLANGE (158EF-7506)



7/16 DIN MALE (716PS-7506)